

**Nokia Customer Care**  
**3155/3155i (RM-41), 3152 (RM-61)**  
**Mobile Terminal**

# **Reassembly**

<b>Contents</b>	<b>Page</b>
Safety Information .....	3
ESD Protection .....	3
Reassembly Instructions.....	4
1. Attach the TX Compression Gasket .....	4
2. Insert the D-cover UIM Card Trap .....	4
3. Attach the Whip Antenna .....	5
4. Insert the Volume Key .....	5
5. Insert the IHF Assembly .....	5
6. Insert the DC Jack and Microphone .....	6
7. Connect the B-cover and the C-cover .....	6
8. Insert the LED Light Guide .....	7
9. Assemble the Engine PWB and the C-cover .....	7
10. Attach the Flex Cable .....	7
11. Connect the C-cover and the D-cover .....	8
12. Add the Screws .....	9
13. Add the Keymat .....	9
14. Attach the Main LCD Display into the B-cover .....	10
15. Attach Earpiece and Acoustic Vent to the B-cover .....	11
16. Attach the UI PWB to the B-cover .....	11
17. Attach the Main Display Flex Cable to the UI PWB .....	12
18. Attach the Secondary LCD Display Flex Cable .....	12
19. Attach the Display Frame .....	12
20. Add the Screws to the A-cover .....	13
21. Attach the A-cover .....	13
22. Insert the Battery and Attach the Battery Cover (E-cover) .....	14

## Safety Information

Adhere to the following guidelines when assembling and disassembling the phone.

- **QUALIFIED SERVICE**  
Only qualified personnel may install or repair phone equipment.
- **ACCESSORIES AND BATTERIES**  
Use only approved accessories and batteries. Do not connect incompatible products.
- **CONNECTING TO OTHER DEVICES**  
When connecting to any other device, read its user's guide for detailed safety instructions. Do not connect incompatible products.

## ESD Protection

Nokia requires that phone repair centers have sufficient ESD protection against static electricity when servicing cellular phones. Use the following guidelines:



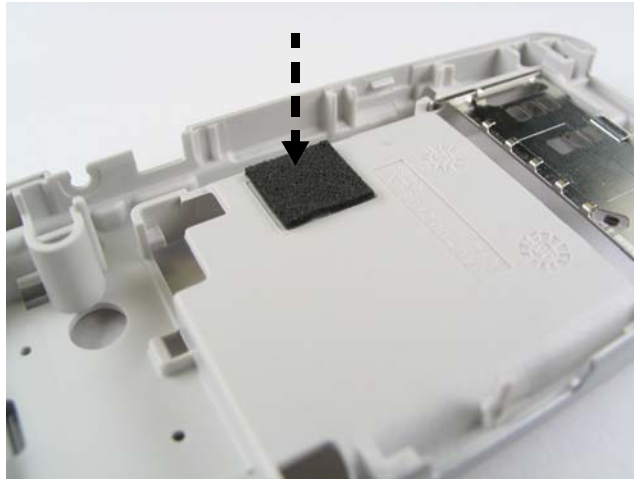
- A cellular phone that is ready for use can be handled normally without ESD protection. The battery can be replaced in normal conditions of use.
- Use ESD protection when replacing a color cover, except for the phone covers which can be replaced by the customer.
- All electronic parts of the phone, including the display, are susceptible to ESD. Resistors also can be damaged by static electricity discharge.
- All ESD-sensitive parts must be packed in metallized protective bags during shipping and handling outside any ESD Protected Area (EPA).
- Every repair action involving opening the phone or handling the phone components must be done under ESD protection.
- ESD-protected spare part packages **MUST NOT** be opened/closed outside an EPA.

For more detailed information about ESD protection and EPAs, contact your local Nokia Customer Care representative.

## Reassembly Instructions

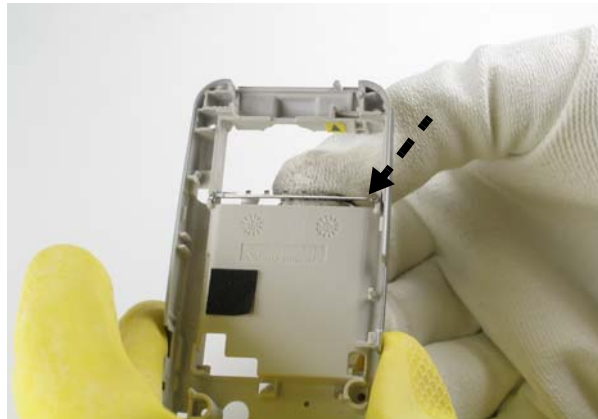
### 1. Attach the TX Compression Gasket

A TX compression gasket is needed only if a new unassembled D-cover is used. Stick the TX compression gasket to the unassembled D-cover.



### 2. Insert the D-cover UIM Card Trap

- a. Insert the guide pin into the slot of the D-cover.



- b. Insert the bottom pin and snap the upper guide pin into the D-cover slot.



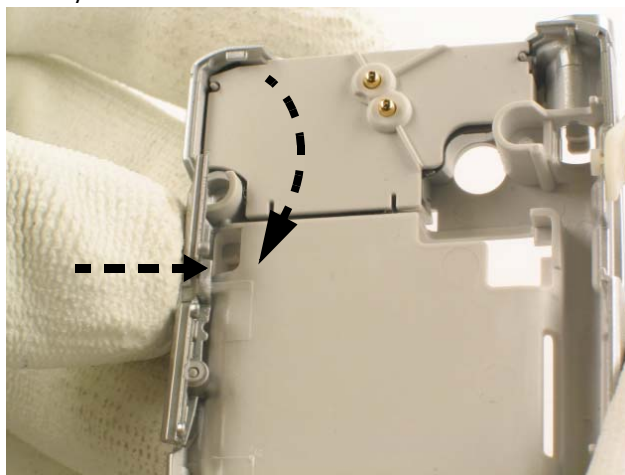
### 3. Attach the Whip Antenna

Attach the whip antenna into the D-cover by pushing down in the direction of the arrow.



### 4. Insert the Volume Key

Insert the volume key into the notch in the D-cover.



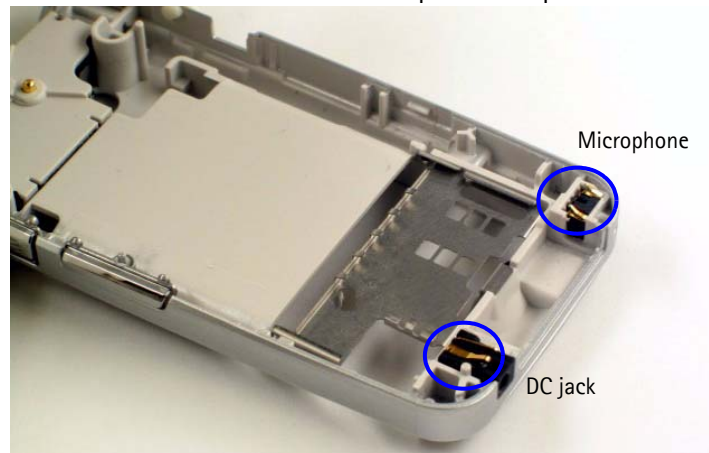
### 5. Insert the IHF Assembly

Place the IHF assembly into the D-cover and snap it into place.



## 6. Insert the DC Jack and Microphone

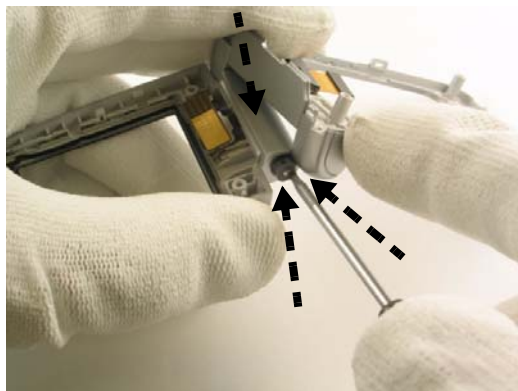
Use tweezers to insert the DC jack and microphone into the D-cover. Ensure that you do not touch the electrical connectors on the top of each part.



## 7. Connect the B-cover and the C-cover

With the mobile terminal in the open position:

- a. Insert the flex cable into the hinge assembly slot of the C-cover.
- b. Insert the rubber hinge bumper into the C-cover.
- c. While applying pressure on the hinge with the screwdriver, apply opposing pressure to the middle of the B/C-cover assembly to snap the hinge into place.

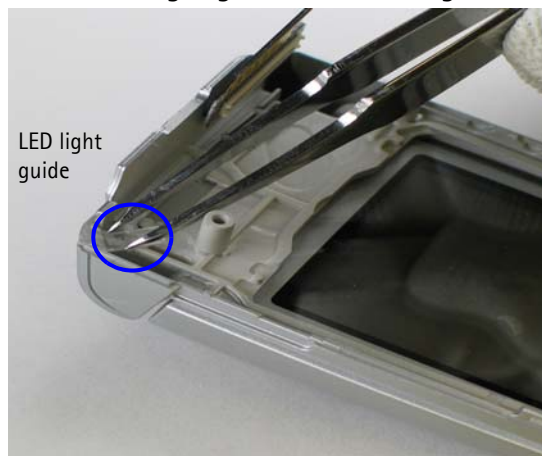


- d. Over-extend the flip until the hinge clicks into place and operates smoothly.



## 8. Insert the LED Light Guide

Use tweezers to push the LED light guide into the hinge assembly of the C-cover.



## 9. Assemble the Engine PWB and the C-cover

Insert the PWB by aligning it using the screw holes and C-cover clasp and snapping it into place.



## 10. Attach the Flex Cable

Carefully lock the flex cable onto the PWB.



## 11. Connect the C-cover and the D-cover

- a. Align the screw holes and combine the D-cover and C-cover.



- b. Engage snaps of the covers at the locking locations shown in following order:

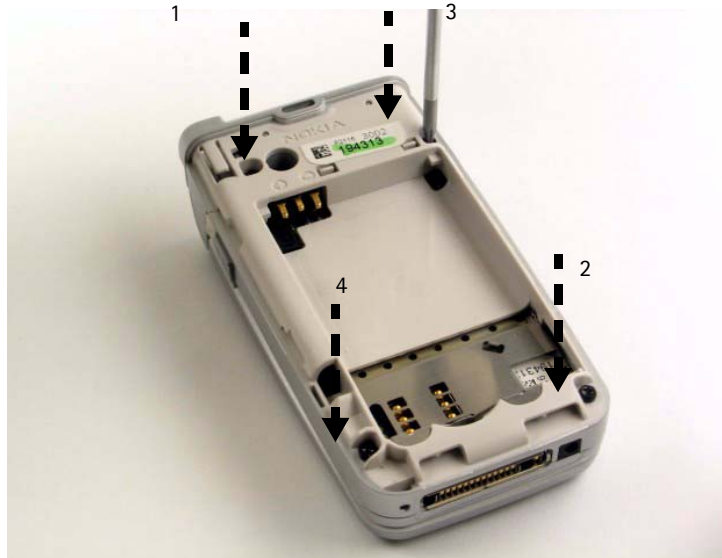
- 1. side snap near volume key
- 2. side snap opposite volume key
- 3. top snap opposite antenna
- 4. top snap near antenna





### 12. Add the Screws

Add the four black screws in a clockwise order as shown. Use torque driver set to 18Ncm.



### 13. Add the Keymat

Insert the top edge of the keymat first. Then bend the keymat to insert the bottom edge.



## 14. Attach the Main LCD Display into the B-cover

For a brand new, unassembled LCD display module, follow the steps below:

- a. Using tweezers, peel back the tape. Peel open the flex cable next.
- b. Carefully replace tape and wrap the flex cable around.



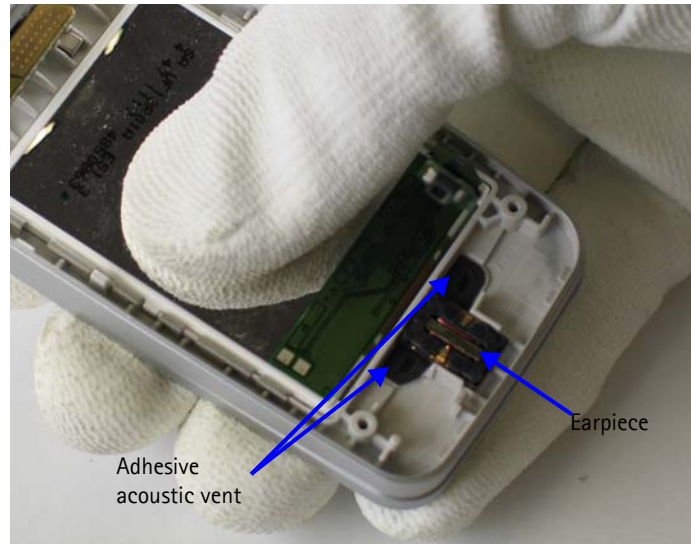
- c. Press the main LCD display into place on the B-cover.



## 15. Attach Earpiece and Acoustic Vent to the B-cover

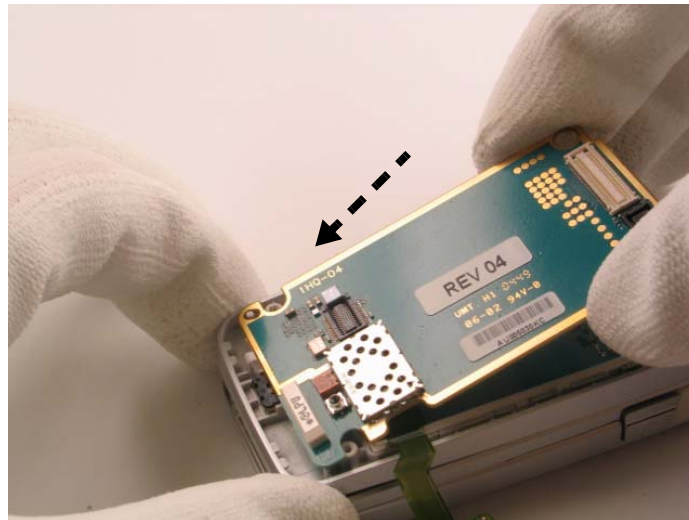
When assembling a brand new unassembled earpiece or changing the earpiece, follow the steps below:

- Remove old earpiece and acoustic vent.
- Attach new adhesive acoustic vent to B-cover
- Place new earpiece on top of acoustic vent and press into place.



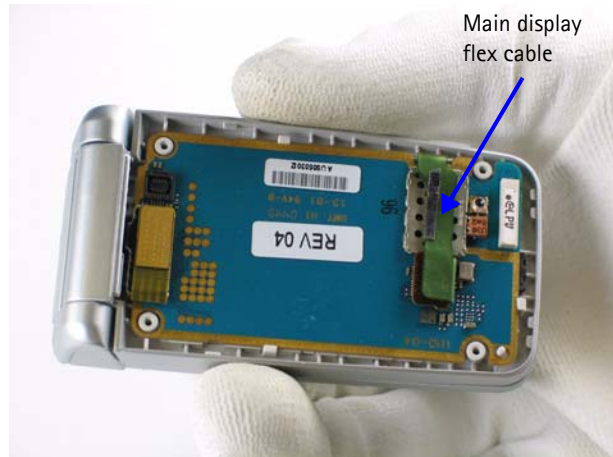
## 16. Attach the UI PWB to the B-cover

Attach the UI PWB to the B-cover using the guide pins.

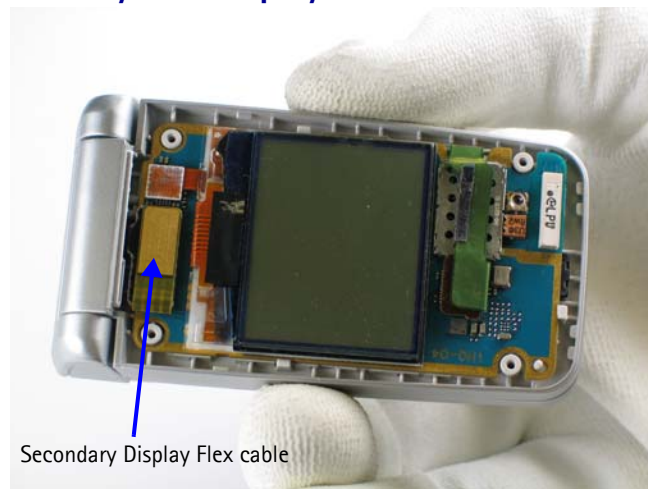


## 17. Attach the Main Display Flex Cable to the UI PWB

Attach the LCD flex connector.



## 18. Attach the Secondary LCD Display Flex Cable



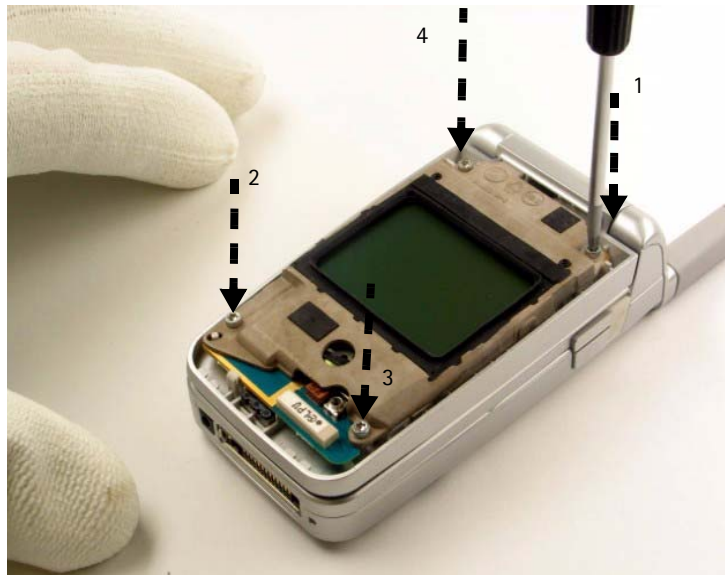
## 19. Attach the Display Frame

Place the display frame into the slot near the hinge, then rotate downward over the LCD display.



### 20. Add the Screws to the A-cover

Add the four silver screws in the order shown below. Use torque driver set to 18Ncm.



### 21. Attach the A-cover

- a. Starting with one side, attach the A-cover bottom snaps into the B-cover hooks.
- b. Press down and away from the antenna as indicated by the arrows to engage the side snaps.
- c. Push down and back as indicated by the arrows to engage the top snaps. Press firmly until you hear and feel the A-cover click into place.



## 22. Insert the Battery and Attach the Battery Cover (E-cover)

- a. Insert the battery.
- b. Align E-cover tabs with the slots, and slide it towards the top while pressing down until you feel it click into place.

